

# The Scaling Scan

**CIMMYT**  
International Maize and Wheat Improvement Center  
in cooperation with

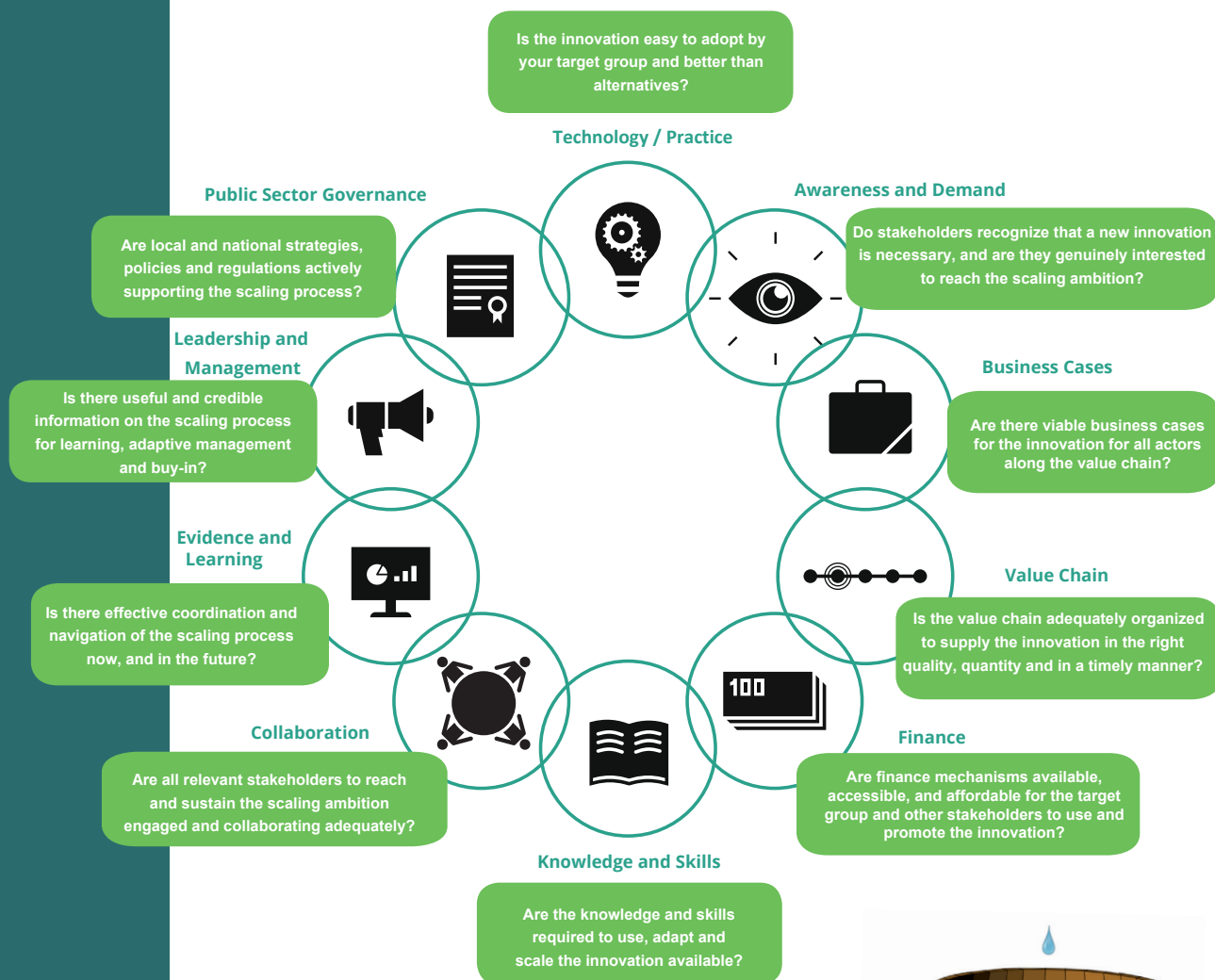


## A practical tool to determine strengths and weaknesses of a scaling ambition

The **Scaling Scan** was designed to systematically deal with the complexities of scaling and tailor scaling approaches to specific contexts. Users are guided through three steps:

**Step 1:** Construct your **Scaling Ambition**: a clear idea of **what** impact would look like, **who** is involved and **why** it is important.

**Step 2:** Assess the level to which you are paying attention to ten critical **Scaling Ingredients**. Answer 4 tactical questions per ingredient using a score from 1 😊 to 5 😞 to reflect your level of confidence that you can reach the scaling ambition.



**Step 3:** Identify and deal with challenges and opportunities.



**Contact:**

María Boa: m.boa@cgiar.org  
Lennart Woltering: l.woltering@cgiar.org

**More info:**

- o [cimmyt.org/work/sustainable-intensification/scaling/](http://cimmyt.org/work/sustainable-intensification/scaling/)
- o [ppplab.org/topic/scaling/](http://ppplab.org/topic/scaling/)